

## TARGET ACTION

### Step Seven: VISUALIZE

Logic models are a visual diagram of the community problem and why it is happening (or a goal and how it will be made to happen). The elements of the picture identified through the team's analysis are informed by science, best practice, and community wisdom. This picture allows the partnership to clearly communicate their understanding with the broader community. The picture also assures that any selected interventions can be clearly aligned with their intended effects. No group should begin taking action until it can show an evidence-based picture of the community problem and why it is happening.

Diagrams of goals, root causes and local conditions enable concise and clear communication, planning and evaluation. Such diagrams, or logic models, also allow a coalition to critically analyze its progress toward shorter term or intermediate goals which can facilitate needed improvement and celebration.

#### Materials:

1. Representational Model Worksheet & Example
2. Common Cause
3. Common Cause Summary
4. Metaphorm Model Worksheet

### Step Eight: ALIGN

Every community team wants to get to action as soon as possible. By first analyzing the goal and identifying community conditions the partnership is now able to select interventions specific to their community and that can build on local assets. Further the team can map the interventions to the anticipated outcomes. As in medicine, the benefit of any intervention is largely determined by the quality of the diagnosis.

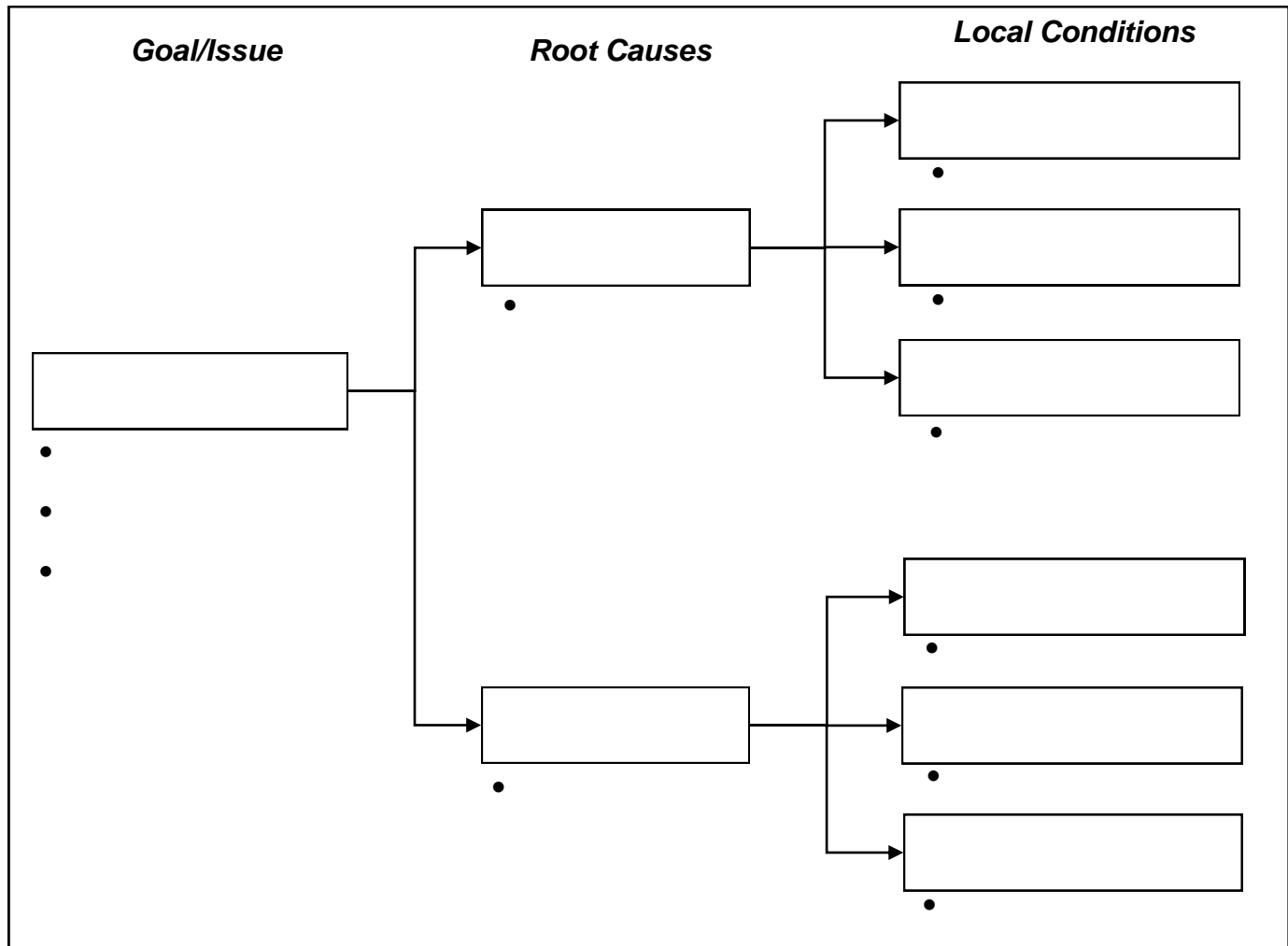
A key to realizing a partnership's impact is distributing the work across the entire membership. Partnerships often develop strong plans but then look to limited numbers of staff for implementation. This essentially turns the coalition or partnership into an advisory board. Collective impact is not achieved by channeling the power of the coalition's membership through one or more staff. Rather, collective impact is achieved by having each partnership member contribute to needed action in line with their role, capacity, and interests.

#### Materials:

1. Designing and Selecting Interventions
2. Resources for Finding Interventions
3. Action Planning Worksheet

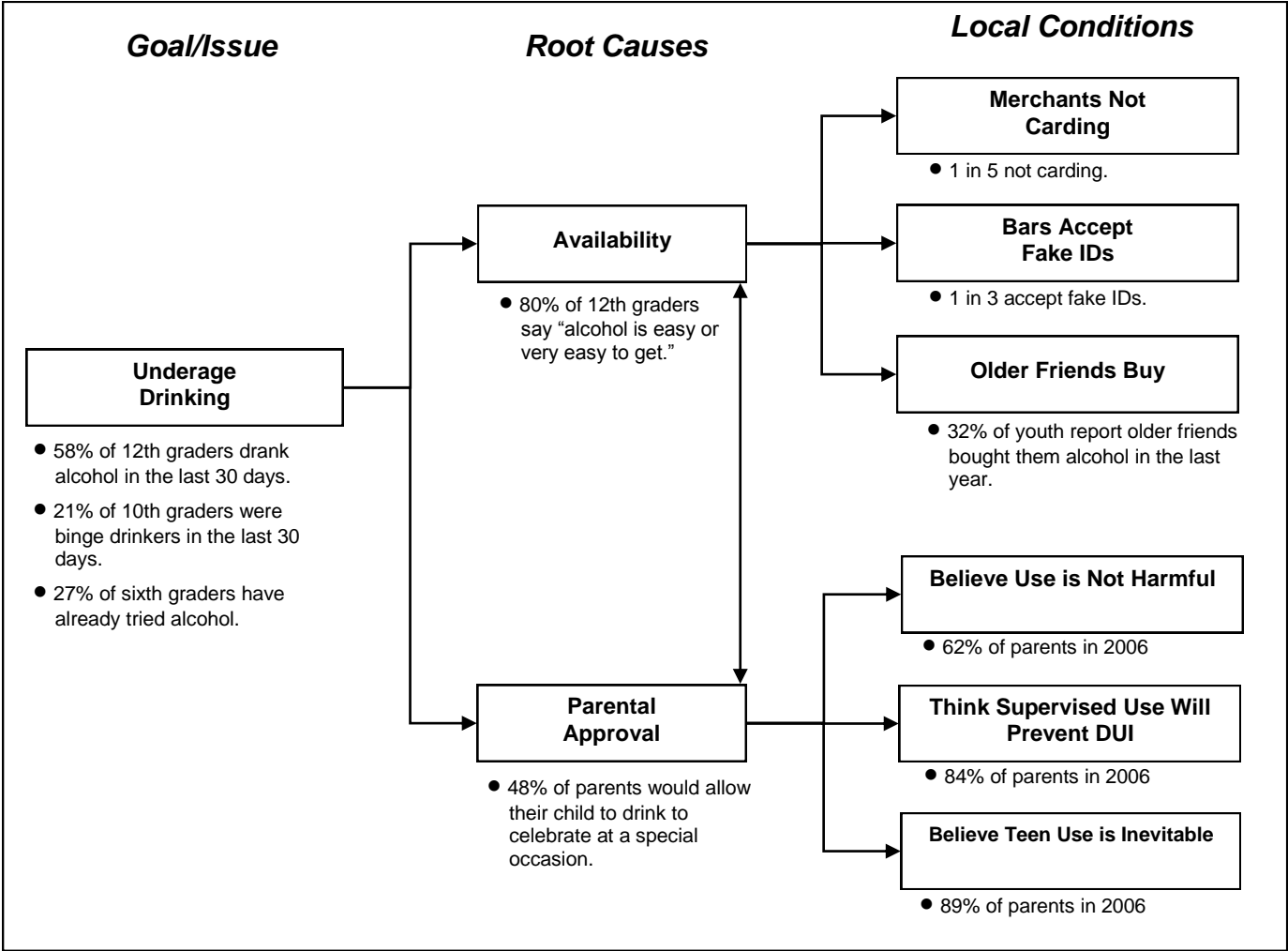


## VISUALIZE: Representational Model Worksheet



1. Place your goal/issue in the first box to the left. Under your issue provide up to three measures or indicators that describe the current level or demonstrate the importance of the issue.
2. Select at least two root causes from the brainstorming exercise that meet the criteria (have data, support by science, supported by community experience and wisdom). Place these in the two boxes in the middle. Provide at least one measure or data element for each.
3. For each of the root causes select up to three local conditions that meet the criteria (have data, supported by science, supported by community experience and wisdom). Place these in the six boxes at the far right. Provide at least one measure or data element for each

## Example: Representational Model



# VISUALIZE: Common Cause Analysis

**SORT & SHIFT TECHNIQUE**

**NOTES:**

1. Review your table's issues. List them here . . . or summarize directly into top of columns on next page.

Team One: \_\_\_\_\_

Team Two: \_\_\_\_\_

Team Three: \_\_\_\_\_

Team Four: \_\_\_\_\_

Team Five: \_\_\_\_\_

2. Review your results from the Common Cause "Sort & Shift" activity.

What root causes and local conditions were shared? (Note the most frequently cited on next page.)

Which were unique? (Note here.)

## VISUALIZE: Common Cause Summary – “the shift”

### INSTRUCTIONS:

1. Across top of middle columns, list each Goal/Issue that your table worked on.
2. For each “common cause” cluster of root causes and local conditions, list 2 or 3 of the most frequently cited causes in column one.
3. For each Goal/Issue, put a check in the related Goal/Issue column.
4. Come up with a summary “name” for each Action Area. Note this in the final column.  
*Discuss: What are the implications of these named clusters for carrying out your joint work?*

Root Causes or Local Conditions (list most common)		Goals/Issues					Name the Cluster
		1	2	3	4	5	
CLUSTER 1							
CLUSTER 2							
CLUSTER 3							
CLUSTER 4							



## VISUALIZE: Metaphorm Logic Model

How might your team explain or display these shared causes to community or family members? Is there a metaphor that could help community members visualize your analysis? Examples might include rivers, trees, pipelines, automobiles (anything organic or mechanical is a good candidate).

Draw your picture or metaphor and place the shared root causes and local conditions in your picture.

## Example: Metaphorm Model

